



APPLIED SCIENCE (BTEC)

BTEC LEVEL 3 NATIONAL EXTENDED CERTIFICATE

COURSE OVERVIEW

The Pearson BTEC Level 3 National Extended Certificate in Applied Science is equivalent to one A Level. On this practical, work-related course you will gain a broad knowledge base for a range of careers in many areas of science.

In addition to specialised Applied Science topics you will study:

- Principles and Applications of Science
- Science Investigation Skills
- Investigative Project
- Practical Scientific Procedures and Techniques
- Laboratory Techniques and their Application



WHAT DO I NEED?

A Grade 5 or above in GCSE Combined Science or the separate sciences is recommended for this course.

HOW IS THE COURSE TAUGHT?

You will be taught through lessons, practical investigations, videos, role-plays and field visits.

You will carry out classroom activities that are based on workplace scenarios.

HOW WILL I BE ASSESSED?

You will be assessed continuously, through classroom presentations, written assignments and practical investigations and reports. You will complete projects and assignments based on realistic workplace situations and engage in activities to introduce you to the different science related career options. There will also be two written examinations.

WHAT DOES IT LEAD TO?

You could progress to employment or university to study a wide range of courses.

EMPLOYER'S BENEFIT

This qualification is equivalent to one A Level and demonstrates to an employer that you can work at a high level to specific deadlines. This is a sought-after skill in the work place.



For further information, visit:

<http://qualifications.pearson.com/en/qualifications/btec-nationals/applied-science-2016.html#tab-1>

For course information please email: msmith@st-anselms.com

ART

AQA Art, craft and design 7201

COURSE OVERVIEW

Students who choose the Art & Design A-Level Course will discover that the course is flexible and will allow students to follow the interests and skills that you have developed at GCSE. You will be introduced to new ways of working and thinking and the opportunity to explore different media and techniques. The Art, Craft and Design title 7201 is a broad-based course exploring practical and critical/contextual work through a range of 2D and/or 3D processes and media.



HOW WILL I BE ASSESSED?

There are two components both of which are marked by your art teachers and moderated by AQA in May of Year 13. Students must demonstrate a response to all four of the assessment objectives in both components. The first component is a practical investigation supported by written material. This requires students to conduct a personal investigation into an idea, issue, concept or theme. The second component is an externally set assignment issued early in February of Year 13. This assignment consists of a choice of eight questions from which you select one. Following the preparatory period, students must complete 15 hours of unaided, supervised time.

AQA	Component 1	Component 2
Length	September (Year 12) - January (Year 13) No time limit	February (Year 13) - May (Year 13) 15 hours supervised
Weighting	60%	40%

ENTRY REQUIREMENTS

In order to cope with the demands of the A Level course it is recommended that students have obtained Art Grade 6 - 9 at GCSE Level. Students must be creative, enthusiastic and hardworking. Students must be able to work independently as they will need to commit a considerable amount of time beyond timetabled lessons to developing their coursework and visiting galleries to enrich their subject knowledge.



WHY STUDY THIS SUBJECT?

The course will enable students to compile a portfolio of work for application to further education ~ Foundation / Degree courses in creative courses. Further education prospects include vocational and degree courses with a number of varied and outstanding, well-structured courses being available. Well qualified and creative art students are much sought after in areas such as Architecture, Advertising, Product Design, Animation and Teaching. Art & Design A-Level is accepted by all Universities as a full academic qualification.

STUDENT EXPERIENCE

A Level Art has broadened my horizons, not only as an artist but as a creative thinker; I have grown to overcome barriers that I never knew I had.
(Joe—Year 13 student)

Further Information: Please email amills@st-anselms.com



BIOLOGY

AQA Specification 7402 (2015)

COURSE OVERVIEW

- Biological molecules
- Cell biology
- Organisms exchange substances with their environment
- Genetic information, variation and relationships between organisms
- Energy transfers in and between organisms
- Organisms respond to change in their internal and external environment
- Genetics, populations, evolution and ecosystems
- The control of gene expression



HOW WILL I BE ASSESSED?

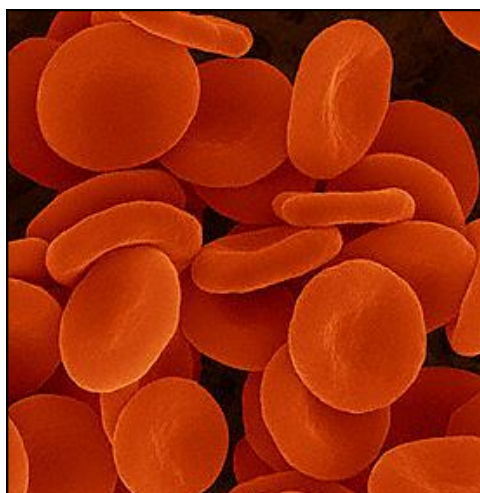
You will take 3 exams of 2 hours each at the end of Year 13. There are also 12 required practical assignments that you will have to pass throughout Years 12 and 13.

AQA	1	2	3
Length	2 hours	2 hours	2 hours
Weighting	35%	35%	30%

ENTRY REQUIREMENTS

Students should gain at least a Grade 6 in either Combined Science or Biology. In addition it is recommended that students have a sound working knowledge of GCSE Chemistry.

WHY STUDY THIS SUBJECT?



There has never been a more inspiring time to study Biology. Scientific advances have greatly improved the quality of life for the majority of people and the new specification demonstrates these cutting edge developments. The course is exciting, challenging and relevant for the modern world. Modern Biology is an enormous subject and starts to prepare students for careers including Medicine, Dentistry, Zoology, Genetic Engineering, Biochemistry, Psychology, Physiotherapy and Ecology. Lessons incorporate a wide variety of practical work and online activities to engage all of our learners to apply their understanding into real-world contexts.

Further Information: Please see Dr Bakht or email kbakht@st-anselms.com

BUSINESS A LEVEL

EXAMINATION BOARD: EDEXCEL

COURSE OVERVIEW

This is a two year course. It involves writing essays, performing calculations and drawing graphs. The specification is divided into four sections

1 Marketing and People

Meeting Customer needs
The Market
Marketing mix and strategy
Managing People
Entrepreneurs and Leaders

2 Managing Business Activities

Raising Finance
Financial Planning
Managing Finance
Resource Management
External influences

3 Business Decisions and Strategy

Business objectives and strategy
Business growth
Decision-making techniques
Influences on business decisions
Assessing competitiveness
Managing change

4 Global Business

Globalisation
Global markets and business expansion
Global Marketing
Global industries and companies (multinational corporations)



A Level	UCAS Points
A*	56
A	48
B	40
C	32
D	24
E	16

HOW WILL I BE ASSESSED?

Three examinations in the summer of Year 13. There is no coursework.

ENTRY REQUIREMENTS

Standard 6th Form entry requirements — Grade 5 and above in five subjects including Maths and English.



WHY STUDY THIS SUBJECT?

Business Studies A-level is a great choice for anyone interested in the world of commerce and entrepreneurship. It's a great way to prepare for university courses in the fields of business and management, and to equip yourself with the know-how to start up your own business or follow a career in finance, accounting, marketing or management post university.

STUDENT EXPERIENCE

"A really challenging and interesting course".
(Matt Year 12 student)

CHEMISTRY

AQA A Level Chemistry 7405

COURSE OVERVIEW

In the lower sixth, the students explore elements and compounds and how molecules stick together. They look at carbon chemistry in a rigorous and logical way for the first time. There is a strong focus on mathematical techniques in work on moles, reaction rates, equilibria and heat energy change. In the upper sixth the students are stretched still further as they try to gain a deeper understanding of substances and the relationships between them. They look at thermodynamics, electrode potentials, pH and spectroscopy. Mathematical techniques make up about 20% of the course.



HOW WILL I BE ASSESSED?

The exam comprises three written papers which include longer written questions and multiple choice sections. They must also complete 12 required practicals during the 2 year course and keep a record of these in a lab manual. Practical techniques are then assessed as part of the written exam.

AQA	1	2	3
Length	105	105	90
Weighting	105	105	90

ENTRY REQUIREMENTS

Students should gain at least a Grade 6 in either Combined Science or Chemistry. In addition it is recommended that students have a sound working knowledge of GCSE Mathematics.



WHY STUDY THIS SUBJECT?

Chemistry is a well-regarded A level which opens doors to many university courses, including business, economics, politics, marketing and law. Most university admission tutors place a high value upon the rigorous and logical nature of the subject. It is a key subject for any student intending to pursue a career in Life Sciences, Medicine, Pharmacology, Dentistry, Veterinary Science or Biotechnology. It is also vital for those interested in degree courses in pure Chemistry, Petrochemical or Industrial Chemistry and Forensic Science.

Students looking for information on the course itself should go to the **AQA** website. For information about careers in Chemistry or Chemical Engineering see the **RSC** website or **WhyNotChemEng**.

COMPUTER SCIENCE

OCR A Level in Computer Science (H446)

COURSE OVERVIEW

The Computer Science specification will above all else be relevant to the modern and changing world of computing. The new specification will:

- Focus on programming, building on our GCSE Computing and emphasise the importance of computational thinking as a discipline.
- Have an expanded maths focus, much of which will be embedded within the course.
- Put computational thinking at its core, helping students to develop the skills to solve problems, design systems and understand human and machine intelligence.
- Allow student to apply the academic principles learned in the classroom to real world systems in an exciting and engaging manner.
- Give students a clear progression into higher education, as the course was designed after consultation with members of BCS, CAS and top universities.



HOW WILL I BE ASSESSED?

Content of Computer systems (Component 01)

- The characteristics of contemporary processors, input, output and storage devices
- Software and software development
- Exchanging data
- Data types, data structures and algorithms
- Legal, moral, cultural and ethical issues

Content of Algorithms and programming (Component 02)

- Elements of computational thinking
- Problem solving and programming
- Algorithms to solve problems and standard algorithms

Content of non exam assessment Programming project (Component 03 or 04)

The learner will choose a computing problem to work through according to the guidance in the specification.

- Analysis of the problem
- Design of the solution
- Developing the solution
- Evaluation

Assessment Overview	
Computer systems (01) 140 marks 2 hours and 30 minutes written paper	40% of total A level
Algorithms and programming (02*) 140 marks 2 hours and 30 minutes written paper	40% of total A level
Programming project (03* or 04**) 70 marks Non-exam assessment	20% of total A level

ENTRY REQUIREMENTS

A GCSE in the subject is desirable. However, if you have good subject knowledge and a keen interest in computing, then you would be considered for the course.



WHY STUDY THIS SUBJECT?

Computer Science is a practical subject where learners can apply the academic principles learned in the classroom to real world systems. It is an intensely creative subject that combines invention and excitement, that can look at the natural world through a digital prism. OCR's Computer Science will value computational thinking, helping learners to develop the skills to solve problems, design systems and understand the power and limits of human and machine intelligence.

DESIGN TECHNOLOGY

Edexcel — course code 9DTO

COURSE OVERVIEW

This is a 3D Product Design course aimed at students with GCSE Design Technology experience. Students should be enthusiastic and willing to develop knowledge and skills in a variety of activities and have the energy and commitment to complete controlled conditions coursework to a high standard throughout the year.

Who are we looking for? Students who are most suited to the course are those who can demonstrate they are capable of developing coherent portfolios of design work and have made well assembled and finished 3D products of quality.



HOW WILL I BE ASSESSED?

Continual assessment of controlled coursework forms the basis of 50% of the available marks and is usually in the form of 3 design and make projects in Year 12. A project portfolio of the work is then submitted for assessment in Year 13. A terminal exam is sat in June also worth 50% of the marks and makes up the rest of the assessment aims.

Edexcel	Exam	NEA
Length	2 hr 30 min	Continuous
Weighting	50%	50%

ENTRY REQUIRMENTS

Grade 6 GCSE in Design Technology



WHY STUDY THIS SUBJECT?

Progression after A Level

Progression onto further study whether in design, engineering or architectural courses is a popular choice with many students. Students are frequently requested to take portfolio evidence to interview whether they are applying for university, employment or modern apprenticeship. D&T 'A' Level is accepted by all Universities as a full academic qualification.

Further Information: Please see Mr McLoughlin, Head of Design Technology or email kmcloughlin@st-anselms.com



ECONOMICS

AQA

COURSE OVERVIEW

Microeconomics: Consumers, firms, markets and market failure

Macroeconomics : The national and international economy



HOW WILL I BE ASSESSED?

Three examination papers from the AQA Examining Board. Questions include multiple choice, data response and essays.

	1	2	3
Length	2 hours	2 hours	2 hours
Weighting	33.3%	33.3%	33.3%

ENTRY REQUIREMENTS

Minimum Grade 6 in GCSE Maths and English.



WHY STUDY THIS SUBJECT?

Students will gain an understanding of the big economic issues of the present day—for example: Brexit, unemployment and the impact and legacy of the Covid crisis.

A Level Economics is highly valued by Universities and Employers.

STUDENT EXPERIENCE

“I am really enjoying Economics and I am looking forward to taking it at university”.

Sam—Year 13

ENGLISH LANGUAGE

AQA A-level English Language (7702)

COURSE OVERVIEW

CORE CONTENT:

Textual variations and representations
Children's language development
Language diversity and change
Language discourses

Writing Skills
Language Investigation
Original Writing

	Paper 1	Paper 2	NEA
Length	2 hours	2 hours 30mins	-
Weighting	40%	40%	20%

HOW WILL I BE ASSESSED?

Paper 1	<p>Paper 1: Language, the Individual and Society Textual variations and representations; Children's language development (0-11 years); Methods of language analysis are integrated into the activities. Written exam: 2 hours 30 mins (40% of A level)</p> <p><i>Section A—Textual Variations and Representations</i> Two texts (one contemporary and one older text) linked by topic or theme. A question requiring analysis of one text (25 marks); A question requiring analysis of a second text (25 marks); A question requiring comparison of the two texts (20 marks)</p> <p><i>Section B—Children's Language Development</i> A discursive essay on children's language development, with a choice of two questions where the data provided will focus on spoken, written or multimodal language (30 marks)</p>
Paper 2	<p>Paper 2: Language Diversity and Change Language diversity and change: Language discourses; Writing skills, language analysis into tasks. Written exam: 2 hours 30 mins (40% of A level)</p> <p><i>Section A—Diversity and Change</i> One question from a choice of two: Either an evaluative essay on language diversity (30 marks) or an evaluative essay on language change (30 marks)</p> <p><i>Section B—Language Disclosures</i> Two texts about a topic linked to a study of diversity and change. A question requiring analysis of how texts use language to present ideas, attitudes, opinions (40 marks) A directed writing task linked to the same topic and the ideas in the texts (30 marks)</p>
NEA	<p>Non-exam assessment: Language Investigation A language investigation (2,000 words excluding data) and a piece of original writing and commentary (1,500 words total) assessed by teachers; moderated by AQA 100 marks (20% of A-level)</p>

ENTRY REQUIREMENTS

GCSE English Language Grade 6 is recommended.



WHY STUDY THIS SUBJECT?

As is the case with other arts subjects, the possibilities are extremely wide. English Language can be taken as a degree in its own right. The skills developed by English Language A-level are highly valued in the legal sector, advertising, media and public relations. English Language goes well with any subject. The course improves awareness of language and develops effective communication, so the study of English Language enhances performance in any other subject.

Further Information: Please see Ms Jones or email bjones@st-anselms.com

ENGLISH LITERATURE

AQA A-level English Literature (7712)

COURSE OVERVIEW

1. Love through the Ages: A. Texts in shared contexts; B. Independent critical study (see 3: NEA) (40% of an A-level)
2. Texts across time Options: Option A: WW1 and its aftermath (40% of an A-level)
3. Non-exam assessment (20% of an A-level)

	Paper 1	Paper 2	NEA
Length	3 hours	2 hours 30mins	-
Weighting	40%	40%	20%

HOW WILL I BE ASSESSED?

Paper 1	<p>Love through the ages</p> <p>Study of three texts: one poetry and one prose text, of which one must be written pre-1900, and one Shakespeare play. Examination will include two unseen poems. Written exam: 3 hours; open book in Section C only; 75 marks (40% of an A-level)</p> <p>Section A: Shakespeare: "Othello" one passage-based question with linked essay (25 marks)</p> <p>Section B: Unseen poetry: compulsory essay question on two unseen poems (25 marks)</p> <p>Section C: Comparing texts: one essay question linking two texts—Poetry Anthology (pre-1900) and F Scott Fitzgerald: The Great Gatsby (Open book) (25 marks)</p>
Paper 2	<p>Texts in shared contexts</p> <p>Option2A: WW1 and its aftermath: study of three texts: one prose, one poetry, and one drama, of which one must be written post 2000. Examination will include an unseen extract. Written exam: 2 hours 30 minutes, open book, 75 marks (40% of A-level)</p> <p>Section A: Set texts. One essay question set on set text—Regeneration: Pat Barker (25 marks)</p> <p>Section B: Contextual linking: one compulsory question on an unseen extract (25 marks) and one essay question linking two texts 'The War Poems of Wilfred Owen': Ed Jon Stallworthy and 'The Wipers Times': Ian Hislop and Nick Newman (25 marks)</p>
NEA	<p>Non-Exam Assessment</p> <p>Comparative critical study of two texts, at least one of which must have been written pre-1900, on theme of satire and dystopia"; choice such as "minds under stress"; "satire and dystopia"; "crime and punishment". One extended essay (2500 words) and a bibliography; 50 marks (20% of A-level) assessed by teachers; moderated by AQA.</p>

ENTRY REQUIREMENTS

GCSE English Literature Grade 6 is recommended.



WHY STUDY THIS SUBJECT?

As is the case with other arts subjects, the possibilities are extremely wide. The skills developed by English Literature A-level are highly valued in the legal sector, advertising, media and public relations. English Literature has natural affinities with Modern Languages, History, Theology and Philosophy and, of course, English Language. However, it can also serve as a good foil to unrelated subjects and scientists have successfully studied English Literature and found it an enriching experience.

Further Information: Please see Ms Jones or email bjones@st-anselms.com

FRENCH



AQA COURSE OVERVIEW

The course will focus on four main themes in the French-speaking world; Aspects of society: current trends and issues; Artistic culture; Aspects of political life; French cinema and a work of Francophone literature. Students will also have the opportunity to participate in trips and/or exchange visits to France.

HOW WILL I BE ASSESSED?

There will be three exams (two on paper, one that is speaking). You will answer comprehension questions about audio and written material, translate short texts and write short essays about film and literature. In speaking, you will give a short presentation about a topic of your choice, which will lead into a longer discussion.

Edexcel	Paper 1 Listening, Reading and Translation	Paper 2 Literature, Film and Translation	3 Speaking Exam
Length	2 hours	2 hours	21-23 minutes
Weighting	50%	20%	30%

ENTRY REQUIREMENTS

You should have GCSE Grade 6 or above. French can be combined with any Arts Subjects, but also with Maths and/or Sciences in order to demonstrate your communication skills. At University, French can be studied as a single degree or, as is becoming increasingly the case, in combination with a business subject, Law or Engineering.

WHY STUDY THIS SUBJECT?



Nearly three quarters of businesses say they value foreign language skills among their employees. Knowledge of French can improve creative, critical thinking and problem solving in English speakers. It also stimulates brain function and memory. Many careers can result from being a French specialist, as well as interpreting, translating and teaching, linguists often work in international law/banking, journalism and broadcasting, publishing or public relations.



GEOGRAPHY

AQA Geography A Level

COURSE OVERVIEW

Geography incorporates both Physical and Human elements of Geography as well as the relationships between them both.

Physical	Human	Geographical Investigation
Water and carbon cycles	Global systems and Global Governance	A written field work enquiry based on either a physical or human topic that incorporates a range of techniques and analysis of independent data.
Coastal Systems and Landscapes	Changing Places	
Hazards	Contemporary Urban Environments.	



HOW WILL I BE ASSESSED?

3 components:

- Two written exams at the end of the 2 year course consisting of short structured questions and extended essay style questions.
- Plus one Geographical Investigation based on fieldwork linked to any topic studied.

AQA	1	2	3
Length	2 hours 30 mins	2 hours 30 mins	3000-4000 words
Weighting	40%	40%	20%

ENTRY REQUIREMENTS

Standard 6th Form entry requirements including minimum Grade 5 in Geography, English and Maths.



WHY STUDY THIS SUBJECT?

Geography allows students to develop an interest and concern for the environment, current events, the impact made on people's lives and different places both locally and globally. Geography is the subject of the future. Students develop initiative and analytical skills as well as allowing opportunities for handling and presenting data. You will be encouraged to develop enquiry methods and examine issues concerning many changes to the environment and their impact. These skills are transferable into different workplace setting which are highly valued by employers.

In higher education a wide range of courses are available for good A Level geographers including Earth Sciences , Environmental Studies, Planning and Geology. Geography is a Science or an Art at degree level so links with all other subjects very successfully.

GERMAN

AQA

COURSE OVERVIEW

The course will focus on a wide range of topics; students study technological and social change, looking at the multicultural nature of German-speaking society. They will study highlights of German-speaking artistic culture, including art and architecture, and will learn how Germany's political landscape was formed. Students will explore the influence of the past on present-day German-speaking communities. Students will study texts and film and will have the opportunity to carry out independent research on an area of their choice.



HOW WILL I BE ASSESSED?

There will be three exams (two on paper, one that is speaking). You will answer comprehension questions about audio and written material, translate short texts and write short essays about film and literature. In speaking, you will give a short presentation about a topic of your choice, which will lead into a longer discussion.

Edexcel	Paper 1 Listening, Reading and Writing	Paper 2 Literature & Film essays	3 Speaking Exam
Length	2 hours 30 minutes	2 hours	21-23 minutes
Weighting	50%	20%	30%

ENTRY REQUIREMENTS

You should have GCSE Grade 6 or above. German can be combined with any subject, including Mathematics and/or Sciences. At University, German can be studied as a single degree or combined with most subjects.



WHY STUDY THIS SUBJECT?

There are more native speakers of German in Europe than any other language. Germany is Europe's largest economy, the UK's largest foreign language trading partner and a worldwide centre of technological innovation, manufacturing excellence, sporting achievement and cultural and gastronomic quality. German speakers are currently more in demand in the UK economy than any other language.

Competence in a foreign language is an asset in almost any career, opening doors for trips abroad and therefore making careers more interesting. As a German specialist, you can use German in teaching and in interpreting and translating in industry, the legal profession, the civil service, banking, engineering or journalism.

HISTORY

OCR History A H505

COURSE OVERVIEW

Students complete 4 units;

Unit 1 (The Age of Peel (1783-1953),

Unit 2 (The Cold War in Europe (1941-95),

Unit 3 (Russia and its Rulers 1855-1964),

Unit 4 (Topic based essay).



HOW WILL I BE ASSESSED?

OCR	1	2	3	4
Length	1 hour 30 mins	1 hour	2 hours 30 mins	NA
Weighting	25%	15%	40%	20%

ENTRY REQUIREMENTS

Standard 6th Form entry requirements including Grade 5 in History, English and Maths.



WHY STUDY THIS SUBJECT?

History has lots of uses. It can be taken as a degree on its own, or is considered useful for law, work in a museum or essential to becoming a really interesting type of teacher. Its skills of analysis, evaluation, selection, organisation, and the ability to communicate your findings orally or in writing are highly valued in the world of work. Or you could become a footballer!

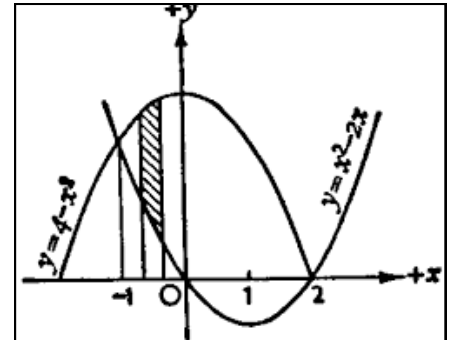
MATHEMATICS

Edexcel A Level

COURSE OVERVIEW

Mathematics A level consists of three main areas of study - Pure Mathematics, Statistics and Mechanics. All three are compulsory. In Pure Mathematics you will learn about series, algebra, functions and graphs. You will also study more about the trigonometric functions and calculus - one of the most important and widely applied areas of mathematics. Statistics builds on data handling from GCSE and goes much further. Mechanics is also studied in Physics and is about motion and forces.

These two subjects are about using mathematics to model real situations.



HOW WILL I BE ASSESSED?

Assessment will consist of three 2 hour examinations taken at the end of Year 13:

Pure Mathematics 1, Pure Mathematics 2 and Mechanics/Statistics.

Each examination carries equal weight towards your final grade.

ENTRY REQUIREMENTS

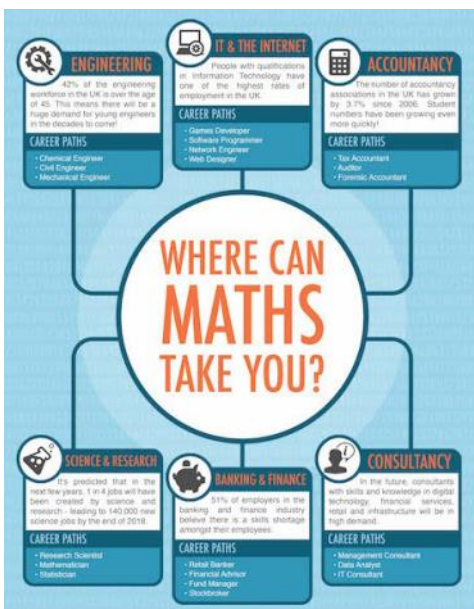
You should have a Grade 7 GCSE in Mathematics.

WHY STUDY THIS SUBJECT?

Mathematics is the most multi-purpose A level.

For those intending to continue on to university, there are very few degree subjects for which a Maths A Level would not be useful. Many degree courses do not require specific A level subjects, but, of those that do, Maths is by far the subject most commonly required. For example, the University of Liverpool has 251 undergraduate courses of which 94 have mathematics A-level as a requirement. For many more it is desirable. That is far more than any other A level subject.

There are many career paths for which mathematics is useful because it requires high order thinking and problem solving skills.



STUDENT EXPERIENCE

Mathematics is a great A level to take at St Anselm's because the teaching and support are really strong and enable me to maximise my grades and achieve well even when I find it challenging. It is a rewarding subject to study because of the level of challenge and because it is so in demand by universities.

(Sam—Year 13 student)

FURTHER MATHEMATICS

Edexcel A Level

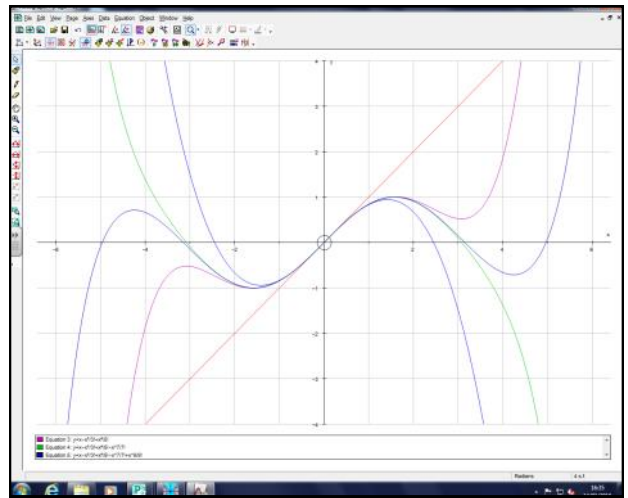
COURSE OVERVIEW

Further Mathematics is an A level in its own right.

You need to be studying Mathematics in order to study Further Mathematics. This is often called "Double Maths".

It should only be studied by committed and talented mathematics students.

Further Mathematics A level develops and deepens your understanding of mathematics. You also study a wider variety of important topics such as complex numbers, hyperbolic functions, matrices, proof, Taylor Series (on the right is the series expansion of $\sin x$) and further calculus. You could also study further statistics or mechanics or both.



HOW WILL I BE ASSESSED?

There are four 1.5 hour examinations.

Further Pure Mathematics 1 & 2 (compulsory) and two others from Further Pure 3 & 4, Further Statistics 1 & 2, Further Mechanics 1 & 2.

The exact combination will depend on the group and their specific interests.

ENTRY REQUIREMENTS

You must have a Grade 8 in GCSE Mathematics or a high Grade 7 and the recommendation of your GCSE teacher.

32. E45.11) $T_n = \int \tan^n \theta \, d\theta, n \geq 2.$
 Show $T_n = \frac{\tan^{n-1} \theta}{n-1} - T_{n-2}$

$$\begin{aligned}
 T_n &= \int \tan^n \theta \, d\theta \\
 &= \int \tan^{n-2} \theta \tan^2 \theta \, d\theta \\
 &= \int \tan^{n-2} \theta (\sec^2 \theta - 1) \, d\theta \\
 &= \int (\sec^2 \theta \tan^{n-2} \theta - \tan^{n-2} \theta) \, d\theta \\
 &= \int \sec^2 \theta \tan^{n-2} \theta \, d\theta - \int \tan^{n-2} \theta \, d\theta \\
 &= \int \sec^2 \theta \tan^{n-2} \theta \, d\theta - T_{n-2} \\
 \sec^2 \theta \cdot \tan^{n-2} \theta &= \frac{\sec^2 \theta \cdot \tan^{n-1} \theta}{\tan^2 \theta} = \frac{\sin^{n-2} \theta}{\cos^2 \theta \cos^{n-2} \theta} \\
 &= \frac{\sin^{n-2} \theta \cdot \cos^2 \theta}{\cos^2 \theta \cdot \cos^2 \theta \cdot \sin^2 \theta} = \frac{\sin^{n-2} \theta}{\cos^2 \theta} \\
 &= \frac{\sin^{n-2} \theta}{\cos^2 \theta}
 \end{aligned}$$

WHY STUDY THIS SUBJECT?

Further Mathematics is a challenging but rewarding course aimed at committed and talented mathematicians. It enables you to study important mathematical concepts in greater depth. You should look at difficult mathematics, like that to the left, and want to know what it means!

If you are considering applying to study a degree such as mathematics, engineering, physics, computer science or a related discipline at a prestigious university then studying Further Mathematics will give you a distinct advantage.

STUDENT EXPERIENCE

Further Maths has been a perfect choice for me because it has broadened and deepened my understanding of the subject and is excellent preparation for my chosen university course. It has enabled me to learn about more advanced and fascinating areas of maths like complex numbers and matrix algebra.

(Ben Year 13 student)

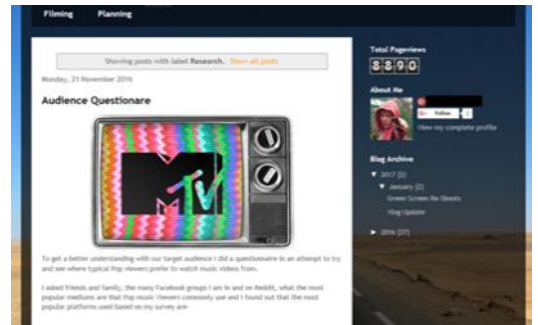
Further Information: Please see Mrs Martin or email smartin@st-anselms.com

MEDIA STUDIES

AQA

COURSE OVERVIEW

The course covers media language, representation, audiences, institutions and practical work over a range of media, including film, television, videogames, advertisements and music videos. Students are encouraged to explore the significance and impact of media products through a range of social and historical contexts. Coursework is individual and allows for the creation of a practical piece and creativity and excellence are encouraged.



HOW WILL I BE ASSESSED?

AQA	
Paper 1 Exam	2 hour written exam. 84 marks. 35% of A Level. Debate and engagement with media theories. Several short answer questions assessing knowledge of case studies from 3 different media areas. Q1x8, Q2x12, Q3x9, Q4x20 mark questions testing depth of knowledge of theoretical frameworks and/or context relating to media products.
Paper 2	2 hour written exam. 84 marks. 35% of A Level. Analysis of media products. Engage with contrasting views of Close Study Products provided by AQA. 1x9 mark and 3x25 mark questions. 1 short answer question/9 and 3 questions assessing in depth knowledge of theoretical framework /25.
Coursework	72 marks. 30% of A Level. Applied knowledge. Practical unit. Teacher assessed. Externally moderated. Students produce a series of cross-media products intended for a specific audience, relating to a theme given by AQA. Examples include: Three minutes TV vox pop (e.g. interviewing members of the public about their attitude to Trump); a music video (A 3 minute music video for a new pop band).

ENTRY REQUIREMENTS

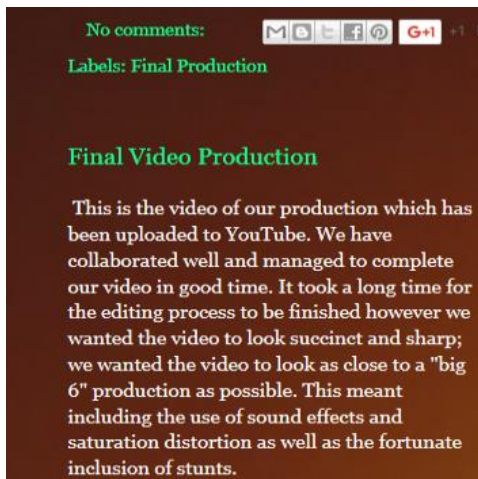
Grade 6 or above in GCSE Language or Literature is preferred. However, enthusiasm for the subject and an interest in blogging, filming and the media is key.

WHY STUDY THIS SUBJECT?

Media offers the opportunity to pursue university courses and career opportunities in film production, scriptwriting, lighting and sound, special effects, research journalism and events organisation. In addition, you will learn filmmaking, presentation and blogging skills that are transferrable to business and management roles. The course also builds skills in research and analysis.

STUDENT EXPERIENCE

We learn about a range of different types of media including television and video games. I am looking forward to making a music video for my practical work.' - (Hugo, Year 12 student).



MUSIC A-LEVEL

Edexcel

COURSE OVERVIEW

Music at A level is a natural progression from GCSE with the same weighting of course components: performance, composition and listening and appraising. As stated above those candidates who do not have GCSE music but can already perform pieces of Grade 5 standard will be able to manage the course and will undertake, where necessary, an additional music theory booster course.



HOW WILL I BE ASSESSED?

Component One: Performing – 30% (coursework)

Solo and/or ensemble performance lasting 8 minutes recorded at the end of Year 13

Component Two: Composition – 30% (coursework)

Two compositions to be submitted lasting a total of 6 minutes, submitted at the end of Year 13.

Composition One is a free composition based on one of the six areas of study (see below). It can be written in any style for any combination of instruments and/or voices.

Composition Two is a technical exercise, using techniques taught during the course, which is completed under controlled conditions at the end of Year 13.

Component Three: Listening and Appraising – 40% (two-hour examination)

There are 18 exciting set works taken from the six areas of study: vocal music; instrumental music; music for film; popular music and jazz; fusions and new directions. Music studied includes Bach, Debussy, Mozart, the Beatles and film scores from Psycho and Batman!

ENTRY REQUIREMENTS

GCSE Music at a Grade 6 or above. Those candidates who do not have GCSE music but can already perform pieces of Grade 5 standard will also be able to manage the course and will undertake, where necessary, an additional music theory booster course.



WHY STUDY THIS SUBJECT?

Music is widely respected and recognised as a rigorous performing arts subject and requires a range of different skills such as analysis, creativity and self-discipline. Music complements other subject areas and, as well as being the pathway to further study of music at university or conservatoire, it can form a great platform for entry into a whole range of creative careers.

The best A level musicians listen widely to a variety of styles; practise every day and take part in some ensemble activity; put themselves forward for concerts and performances; enjoy discussing music and offering their opinions and look to professional performances and recordings for inspiration on how to develop their own technique and skills. If you have a love of music along with self-motivation this is an ideal course.

STUDENT EXPERIENCE

“A very practical subject. It’s really expanded my knowledge and understanding of music” - (Jacob, Year 12 student)

Further Information: Please see Mr Watson or email cwatson@st-anselms.com

BTEC LEVEL 3 NATIONAL EXTENDED CERTIFICATE IN MUSIC PERFORMANCE

Previous qualifications	A '5' at GCSE or above or a Grade 4/5 standard in your instrument. You should also have practical experience of live performance or composing.
Examination Board	EDEXCEL

COURSE OVERVIEW

There are two mandatory units in Music Performance and Professional Practice in the Music Industry.

You will then choose from a range of units to suit your musical tastes and abilities. These include solo performance, composition, arranging music and music theory.

You will learn in a range of styles including practical lessons rehearsing, composing, forming bands and groups, trips to studios, events and concerts.



HOW WILL I BE ASSESSED?

Some units are externally assessed whilst the others are internally assessed and graded Pass Merit or Distinction.

A variety of methods are used including presentations, recordings, written projects and performances.

What careers or higher education follow from this subject?

Musicians can go on to numerous careers within and beyond the world of music. The skills required to be a good musician (creativity, listening, perseverance, team skills) are sought by further and higher education courses and employers from all walks of life.

We would encourage you to join or help lead one of our many ensembles/choirs and/or form your own band. We would highly recommend having instrumental or vocal lessons from one of our talented and dynamic peripatetic teachers. You will have the opportunity to take part in a number of performances in a range of venues giving you musical experiences you will remember for the rest of your life!



WHY STUDY THIS SUBJECT?

Music is all around us. It influences our moods and emotions and stimulates us in many ways. It is a universal language central to cultures around the world. Recent neurological research has proven that studying an instrument is the only activity we do that engages every part of your brain. It develops your intelligence, your ability to solve problems and your emotional insight.

This course will give you the opportunity to immerse yourself in music and express yourself as a performer and/or a composer. It will give you an insight into the varied employment opportunities in the music industry and practical experiences and performance opportunities to be proud of for the rest of your life.

The course can be adapted to your interests, abilities and aspirations both in what you study and in how you are assessed.

STUDENT EXPERIENCE

"An extremely hands on subject that develops your skills as a musician and offers you more experience going into the modern music industry" - (Adam—Year 13 student)

Further Information: Please see Mr Watson or email cwatson@st-anselms.com

PHYSICAL EDUCATION

OCR Level 3 Advanced GCE in *Physical Education* COURSE OVERVIEW

Studying *A Level Physical Education* will give you a fantastic insight into the amazing world of sports performance. Not only will you have the chance to perform a sport through the non-exam assessment component, but you will also develop a wide-ranging knowledge of the 'how and why' of physical activity and sport.

This combination of physical performance and academic challenge provides an exciting opportunity for students. You can then perform through academic study, whilst gaining a vast array of knowledge to improve your own performance along with that of others. The *A Level in Physical Education* is studied through a range of different contexts. You will learn the reasons why we do things along with why some people outperform others – both mentally and physically. You will also delve into the ethical considerations behind the use of drugs, together with analysing the influence that modern technology is having on physical activity and sport.

All areas of content are now compulsory. As such, you will receive a well-rounded and full introduction to the world of PE, sport and sport and exercise science. This complete grounding in the subject provides a fantastic base for higher education, employment or other further training.

Students will have the opportunity to develop a wide-ranging set of key skills, including effective communication using appropriate verbal and body language, dealing with pressure, split-second decision making, interpreting and analysing data, as well as analysing and evaluating performance, so necessary and appropriate improvements can be made.

HOW WILL I BE ASSESSED?

Content Overview	<ul style="list-style-type: none"> Applied anatomy and physiology Exercise physiology Biomechanics 	<ul style="list-style-type: none"> Skill acquisition Sports psychology 	<ul style="list-style-type: none"> Sport and society Contemporary issues in sport 	<ul style="list-style-type: none"> Performance Evaluation and Analysis of Performance for Improvement (EAPI)
Assessment Overview	<p>1. Physiological factors affecting performance</p> <p>30% of total A level</p>	<p>2. Psychological factors affecting performance</p> <p>60 marks 1 hour written paper</p> <p>20% Of total A level</p>	<p>3. Socio-cultural issues in physical activity and sport</p> <p>60 marks 1 hour written paper</p> <p>20% Of total A level</p>	<p>4. Performance in physical education</p> <p>60 marks non-exam assessment (NEA)</p> <p>30% of total A level</p>



ENTRY REQUIREMENTS

- Grade 6 at GCSE PE
- A good scientific background.
- One sport at College level or higher representation, for practical assessment.
- A commitment to College sport.

WHY STUDY THIS SUBJECT?

The sports industry is one of the fastest growing sectors of modern society. You only have to look at the rise of performance analysis in Premier League football or at the growth of the Olympic and Paralympic movements to see that, with the right qualifications and a passion for sport, there are a huge number of exciting opportunities open to talented young people.

A Level PE represents the first steps towards these opportunities. With a solid grounding in a wide range of sports disciplines, our students go on to study sports related courses at a number of the UK's leading universities. Possible career pathways for those with *A Level PE* include PE teaching, Sports Coaching, Performance Analyst, Nutritionist, Journalist, Sports Development Officer, Physiotherapist and many more.

For those with career aspirations elsewhere, *A Level PE* has many commonalities with a number of other courses and is complimented particularly well by Biology, Psychology, History and, to a lesser extent, Maths and Physics. An *A Level in PE* may well be beneficial to further study in subjects as diverse as medicine and politics. Recent Old Boys are currently working for:- UK Sport, as a doctor in Sports Medicine, Manchester United as a Sports Scientist, Football League clubs as physiotherapists, teaching, coaching and sports journalism.



BTEC SPORT AND EXERCISE SCIENCE

COURSE OVERVIEW

What is a BTEC Level 3 Diploma?

The BTEC Level 3 Diploma in Sport and Exercise Science is a full-time vocational qualification that is equivalent to 2 A-levels. Taken alongside a further qualification related to their chosen field, this qualification is for learners who are intending to study towards a degree in the sport and exercise sector, Higher Education, Employment or an Apprenticeship.

The programme is designed to enable students to gain both academic and practical experience and become competent in areas that are directly related to the workplace. This course allows you to develop skills in a sports environment, while continuing to enjoy practical sports performance, gaining experience and qualifications in coaching. The course provides progression opportunities into vocationally relevant employment or higher education, including a guaranteed place scheme for HE sport options within the department.

Who is the course for?

Those with an interest in; PE teaching, athlete development, professional sport, Leisure Centre management, sports development, sports coaching, health and lifestyle management, personal training, nutrition, sports injury rehabilitation.

The Course Content will include:

Sport Psychology, Coaching for Performance and Fitness, Analysis of Sport Performance, Biomechanics, Anatomy and Physiology, Fitness training for excellence, Fitness testing and Research Methods.

HOW WILL I BE ASSESSED?

Total units: 8—6 Mandatory Units PLUS 2 Optional Units. 2 Units will be externally assessed during 2 x 90 minute exams in Anatomy Physiology and Exercise Physiology. **A further Unit, Sports Psychology, is assessed via 3 hour Exam Controlled assessment. The remaining 5 Units are coursework based and include a variety of assignments and scenarios.**

ENTRY REQUIREMENTS

- Minimum Grade 5 at GCSE Physical Education or Science
- One sport at College level or higher representation, for practical assessment.
- A commitment to College sport.

Where can this course lead me?

The BTEC Level 3 Diploma in Sport and Exercise Science provides a natural route into higher education for courses such as Foundation Degrees and Honours Degrees in sport related disciplines. This progression will inevitably depend on your performance, the course allows you to obtain 112 UCAS points (equivalent to 2 A*s at A Level).



WHY STUDY THIS SUBJECT?

The sports industry is one of the fastest growing sectors of modern society. You only have to look at the rise of performance analysis in Premier League football or at the growth of the Olympic and Paralympic movements to see that, with the right qualifications and a passion for sport, there are a huge number of exciting opportunities open to talented young people.

BTEC SPORT AND EXERCISE SCIENCE could represent one the first steps towards these opportunities. With a solid grounding in a wide range of sports disciplines, our students go on to study sports related courses at a number of the Universities or gain job opportunities in the North West sports sector. Possible career pathways for those with *BTEC Sport* and Exercise science include Sports Coaching, PE teaching, Match Analyst, Nutritionist, Journalist, Sports Development Officer, Sports Retail and many more.

Recent Old Boys are currently working in:- Teaching, Sports Coaching, Performance analysis, Paramedic and in the Media working as a Sports Journalist. Others are currently studying Sports Nutrition, Sports Technology, Sports Psychology and in a wide range of other Degree courses.



Further Information: Please see Mr Hale or email ahale@st-anselms.com

PHYSICS

AQA A Level Physics 7408

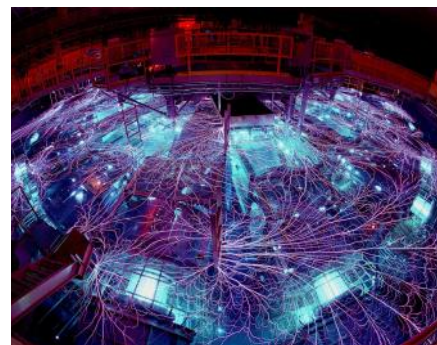
COURSE OVERVIEW

Year 12:

Measurements and their errors, particles and radiation, waves, mechanics and materials, electricity.

Year 13:

Further mechanics and thermal physics, fields and their consequences, nuclear physics, astrophysics.



HOW WILL I BE ASSESSED?

Paper 1	+	Paper 2	+	Paper 3
What's assessed Sections 1–5 and 6.1 (Periodic motion)		What's assessed Sections 6.2 (Thermal Physics), 7 and 8 Assumed knowledge from sections 1 to 6.1		What's assessed Section A: Compulsory section: Practical skills and data analysis Section B: Students enter for one of sections 9, 10, 11, 12 or 13
Assessed <ul style="list-style-type: none"> written exam: 2 hours 85 marks 34% of A-level 		Assessed <ul style="list-style-type: none"> written exam: 2 hours 85 marks 34% of A-level 		Assessed <ul style="list-style-type: none"> written exam: 2 hours 80 marks 32% of A-level
Questions 60 marks of short and long answer questions and 25 multiple choice questions on content.		Questions 60 marks of short and long answer questions and 25 multiple choice questions on content.		Questions 45 marks of short and long answer questions on practical experiments and data analysis. 35 marks of short and long answer questions on optional topic.

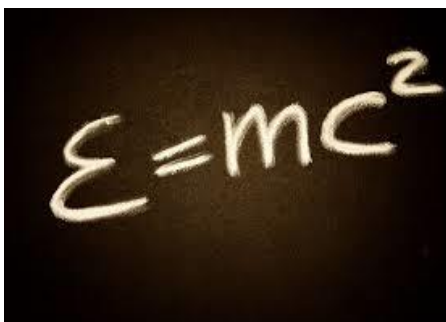
ENTRY REQUIREMENTS

Physics is a demanding subject. Whether you are taking GCSE Separate Sciences or GCSE Combined Science, a grade 7 or better is required. You will also need a 6 (preferably a 7 or better) in GCSE Mathematics.

WHY STUDY THIS SUBJECT?

It is difficult to think of a career where Physics would not be useful. Employers value A level Physics because it combines practical skills, mathematics and open-ended problem-solving. Students studying A level Physics at St Anselm's in the past have gone on to study Medicine, Mathematics, Engineering, Physiotherapy, Sports Science, Pharmacology and a whole host of other subjects at university, as well as Physics.

Physics graduates go into a wide variety of careers, ranging from ICT or financial modelling for the Stock Market to engineering or scientific research in universities or for employers like the Ministry of Defence. Some even go into teaching!



Further Information please see:

<http://www.aqa.org.uk/subjects/science/as-and-a-level/physics-7407-7408/spec-at-a-glance>

POLITICS

COURSE OVERVIEW

Module Information:

Component 1: UK Politics and Core Political Ideas (conservatism, liberalism, socialism)

Component 2: UK Government and Non-core Political Ideas (anarchism, feminism, multiculturalism and nationalism).

Component 3: Comparative Politics: the US Constitution and Federalism, US Congress, US Presidency, US Supreme Court and civil rights, democracy and participation, comparative theories.



At the core of this course are certain key ideas. These include sovereignty, democracy, civil liberties, constitutional law and political ideologies. Examples of contemporary political issues concerning the UK and USA include elections and their outcome, the economy, and the quality of public services such as health and education.

HOW WILL I BE ASSESSED?

The assessment consists of three 2 hour exams. There is no coursework.

Edexcel	UK Politics	UK Government	Comparative Politics: US Politics
Length	2 hour exam	2 hour exam	2 hour exam
Weighting	33 % of the qualification	33 % of the qualification	33 % of the qualification

ENTRY REQUIRMENTS

A good standard of English and a keen interest in current affairs. If you are interested by the way decisions are made, who makes them and the thinking behind them, then this subject will interest you. Decisions are constantly being made which will affect you and your families. Studying Politics will provide a greater insight into the beliefs and processes which is central to understanding the modern world.



WHY STUDY THIS SUBJECT?

Studying Politics now is more exciting than ever before. Crucial developments – such as the UK’s vote to leave the EU, Boris Johnson’s premiership, the election of Joe Biden in the USA, the global pandemic and the use of ‘Trussonomics’ have changed the political landscape.

You will develop many skills including the ability to conduct research, develop oral and written communication and IT skills. These skills are invaluable in today’s higher education and

STUDENT EXPERIENCE

“I have found the Politics course at St. Anselm’s very engaging and interesting. The teaching is good and work is always marked quickly and with good feedback” - (Ben, Year 12 student).

Further Information: Please see Dr Cooper or Mr Dillon

PSYCHOLOGY

AQA

COURSE OVERVIEW

Your development of a sound foundation knowledge of Psychology includes learning about Social Influence, Memory, Attachment, Psychopathology, Approaches in Psychology, Bio-Psychology, Research Methods, Descriptive and Inferential Statistics, Issues and Debates in Psychology, Gender, Schizophrenia and Aggression. Each topic will be applied to real and current world situations facing society today.



HOW WILL I BE ASSESSED?

A LEVEL Three two hour terminal exams are taken at the end of year two course

AQA	1	2	3
Length	2 hours	2 hours	2 hours
Weighting	1/3	1/3	1/3

ENTRY REQUIREMENTS

A Grade 6 in Maths and Biology is preferred, as is a minimum Grade 5 in English.

Finally and most importantly, students need to be able to write several clear, fluent and coherent essays in each of their exams, so very good quality English Language skills are absolutely essential.



WHY STUDY THIS SUBJECT?

....."Psychology has the potential to create wonder in anyone who studies it. It is the personal science that explores how we make sense of the world, ourselves and others. It is about gaps between sensation and perception. It is about the wonder of being alive"..... British Psychological Society Education Board 2015.

Psychology has been re-classified as a Science A Level and so links in very well with not only the sciences but other subjects due to its wide ranging application and relevance to the challenges faced by individuals within society today.

SPANISH

AQA



COURSE OVERVIEW

The course will focus on four main themes in the Spanish-speaking world; Aspects of society: current trends and issues; Artistic culture; Aspects of political life; Spanish cinema and a work of Spanish literature. Students will also have the opportunity to participate in trips and/or exchange visits to Spain.

HOW WILL I BE ASSESSED?

There will be three exams (two on paper, one that is speaking). You will answer comprehension questions about audio and written material, translate short texts and write short essays on film and literature. In speaking, you will give a short presentation about a topic of your choice, which will lead into a longer discussion.

	Paper 1 Listening, Reading and Translation	Paper 2 Literature, Film and Translation	Paper 3 Speaking Exam
Length	2 hours 30 mins	2 hours	21-23 mins
Weighting	50%	20%	30%

ENTRY REQUIREMENTS

You should have GCSE Grade 6 or above. Spanish can be combined with Arts Subjects, and also with Mathematics and/or Sciences in order to demonstrate your communication skills. At University, Spanish can be studied as a single degree, or as is becoming increasingly the case, in combination with a wide range of subjects including Law and Medicine.

WHY STUDY THIS SUBJECT?

Linguists can earn up to 20% more than those who do not speak a foreign language. Nearly three quarters of businesses say they value foreign language skills among their employees. Knowledge of Spanish can improve your communication, critical and creative thinking skills. It will increase your problem solving skills and will stimulate brain function and memory. It also demonstrate to employers that you have strong self-discipline and high self-esteem. Spanish can open the door to many industries, as well as the obvious interpreting, translating and teaching, linguists often work in international law/banking, journalism and broadcasting, publishing, public relations and sport.



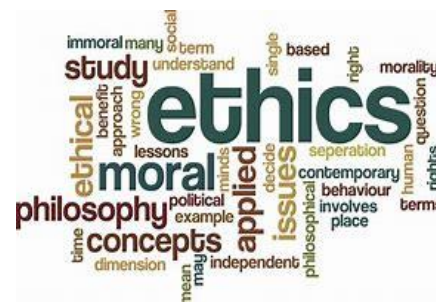
THEOLOGY

Exam Board & Spec Eduqas

COURSE OVERVIEW

Theology A-Level presents a stimulating and challenging curriculum focused on three main areas:

- Philosophy—including questions about the existence of God, religious experience, the problem of evil and suffering
- Ethics— key ethical theories (including Utilitarianism, Situation Ethics)
- Development of Christian Thought—including Predestination and Free Will



HOW WILL I BE ASSESSED?

Written essays responding to discussion questions. Fortnightly tests in lessons to build confidence and further develop the necessary skills.

Eduqas	1	2	3
Length	2 hours	2 hours	2 hours
Weighting	33.3%	33.3%	33.3%

ENTRY REQUIREMENTS

Standard 6th Form entry requirements including minimum Grade 5 in English, Maths and Religious Studies.



WHY STUDY THIS SUBJECT?

- To develop an enquiring, critical and reflective approach to academic study.
- To develop your own values, opinions and attitudes.
- Theology gives an excellent introduction to areas of study relevant, to Law, Medicine, Philosophy and Literature.
- Theology A-Level is considered an attractive and preferred subject by all Russell Group Universities.



Further Information: Please see the Eduqas Website or email rlong@st-anselms.com